

SCT 6-25



Deck Screwdriver



SERVICE

Tool service and maintenance must be performed only by qualified repair personnel.

When servicing a tool, only use identical replacement parts available from FEIN.

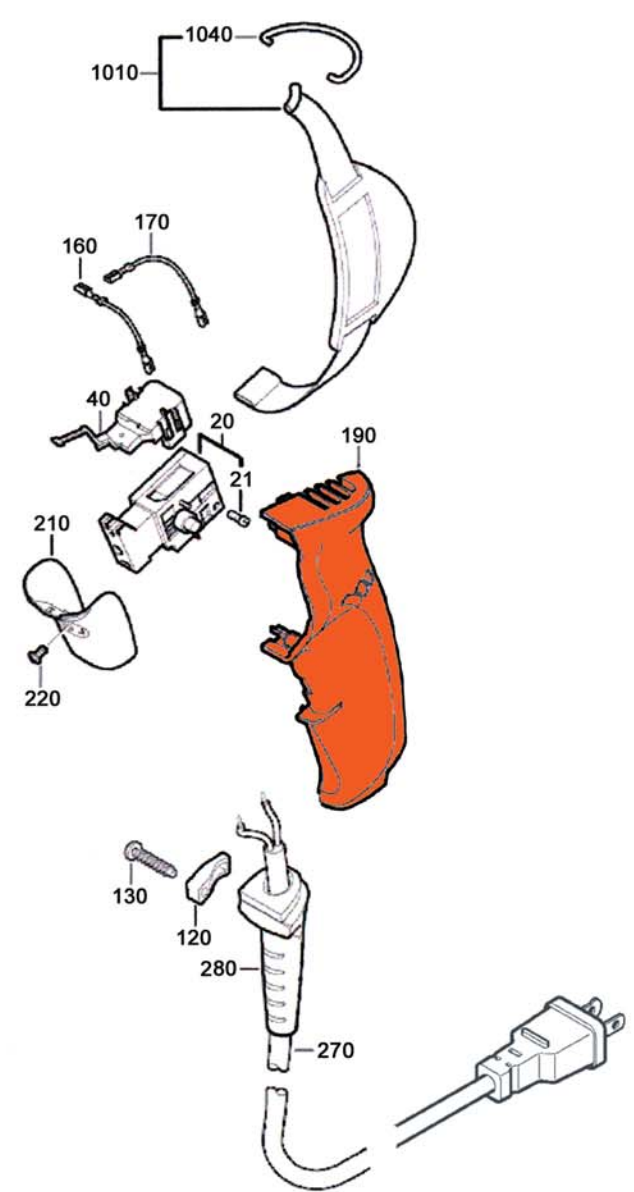
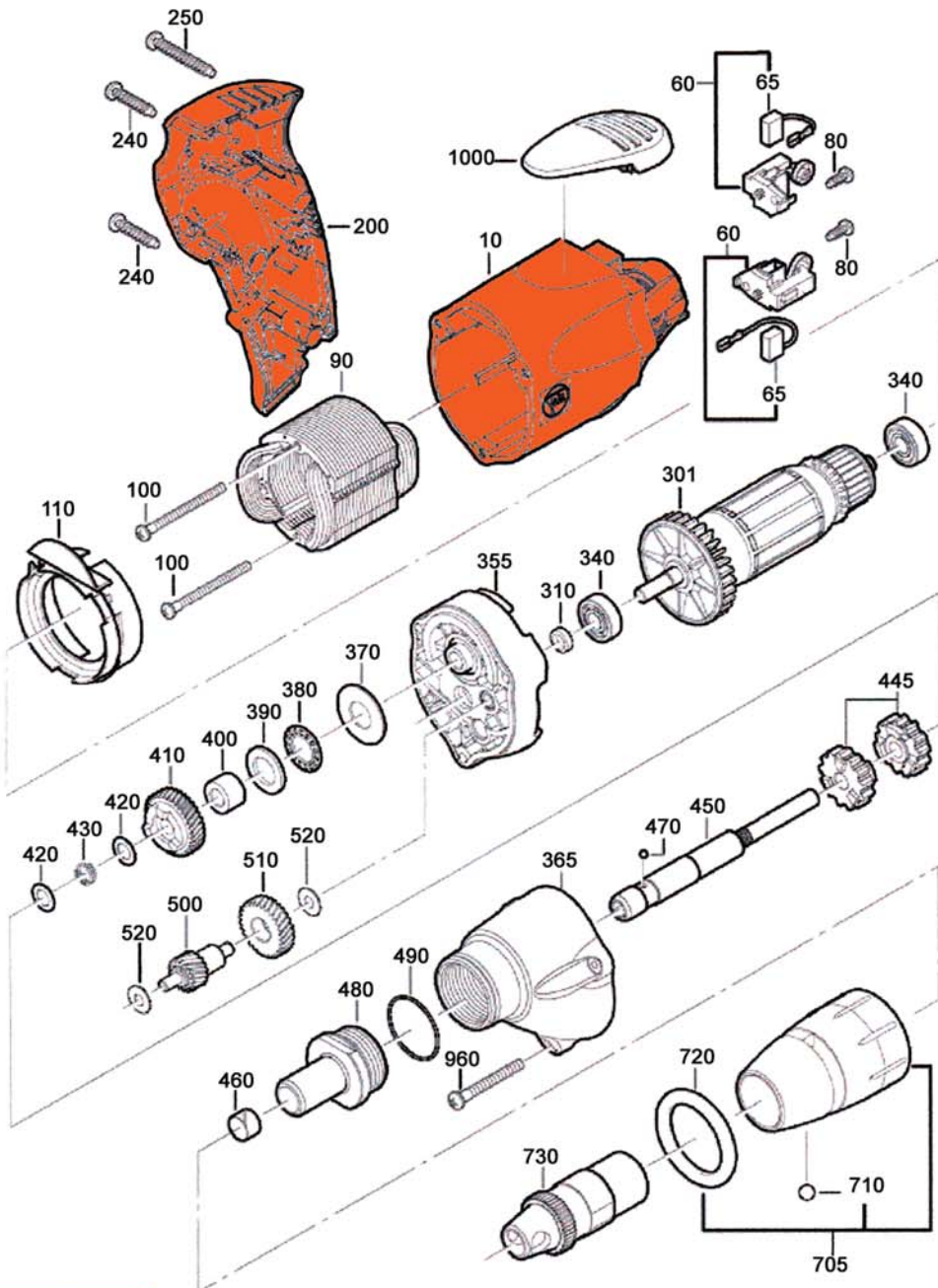
Repairs on FEIN Power Tools required the use of special tools (pulling devices and bearing press). Authorized repair centers have trained repair technicians and equipment necessary to perform these repairs. Service or repairs performed by unqualified persons could result in operator injury.

For the location of the repair center near you, please call 1-800-441-9878. Monday thru Friday, 9AM to 5PM EST. Or, look on our web site at www.feinus.com and follow the link to "Authorized Warranty Repair Centers"

**FEIN Power Tools
1030 Alcon Street
Pittsburgh, PA 15220**

Phone: 412-922-8886 Fax: 412-922-8767 Toll Free: 1-800-441-9878

August 22, 2006



Deck Screwdriver

Model: SCT 6-25

FEIN Power Tools

SCT6-25 Parts List

<u>Item</u>	<u>Item Number</u>	<u>Description</u>	<u>Reqd</u>	
10	3-19-01-138-01-1	MOTOR HOUSING	1	_____
20	3-07-01-234-00-2	SWITCH	1	_____
21	4-30-13-052-03-3	SCREW	2	_____
40	3-07-01-249-00-4	SWITCH REPAIR SET	1	_____
60	3-07-12-089-02-3	BRUSH HOLDER	2	_____
65	3-07-11-134-00-5	CARBON BRUSH	2	_____
80	4-30-70-018-00-9	SCREW	2	_____
90	5-1-274-004-11-7	FIELD WITH WINDING	1	_____
100	4-30-70-014-00-0	SCREW	2	_____
110	3-14-28-149-00-8	AIR CONDUCTING RING	1	_____
120	3-24-31-041-00-5	CLAMPING PIECE	1	_____
130	4-30-70-006-00-8	SCREW	1	_____
160	3-07-19-565-01-6	CONNECTION CABLE	1	_____
170	3-07-19-566-01-9	CONNECTION CABLE	1	_____
190	3-12-01-123-00-3	HANDLE LOWER PART	1	_____
200	3-12-01-124-00-1	HANDLE UPPER PART	1	_____
210	3-28-05-191-00-2	SWITCH TRIGGER	1	_____
220	4-30-66-009-03-8	SCREW	1	_____
240	4-30-16-003-00-9	SCREW	2	_____
250	4-30-70-007-00-2	SCREW	1	_____
270	3-07-07-101-01-2	CABLE ASSEMBLY	1	_____
280	3-14-13-224-00-9	PROTECTIVE SLEEVE	1	_____
301	5-3-274-004-11-9	ARMATURE	1	_____
310	3-26-12-084-00-1	PACKING RING	1	_____
340	4-17-01-001-17-2	BALL BEARING	2	_____
355	3-15-06-367-01-4	INTERM HOUSING	1	_____
365	3-15-08-250-05-6	GEAR HOUSING	1	_____
370	4-17-19-026-00-7	AXIAL DISC	1	_____
380	4-17-15-029-00-9	NEEDLE BEARING	1	_____
390	3-24-08-395-00-0	DISC	1	_____
400	3-05-07-233-00-5	BUSH	1	_____
410	3-36-57-173-00-3	SPUR WHEEL Z=34	1	_____
420	3-26-24-094-03-2	WASHER	2	_____
430	3-09-01-139-00-7	COMPRESSION SPRING	1	_____
445	3-01-02-101-01-3	CAM RING	1	_____
450	3-01-04-130-00-0	TOOL HOLDER	1	_____
460	3-09-06-025-00-8	RETAINING RING	1	_____
470	4-17-08-014-00-1	BALL	1	_____
480	3-16-03-045-00-5	BUSHING	1	_____
490	4-06-12-093-00-4	O RING	1	_____
705	3-05-05-069-01-1	SLEEVE ASSEMBLY	1	_____
710	4-17-08-019-00-4	BALL	2	_____
720	4-06-12-071-00-9	PACKING RING	1	_____
730	3-21-27-057-00-8	DEPTH STOP	1	_____
960	4-30-72-010-00-9	SCREW	3	_____
1000	3-02-40-257-00-1	BELT HOOK	1	_____
1010	6-39-01-011-05-9	HANDBELT	1	_____
1040	3-02-32-046-00-8	SNAP RING	1	_____

